

- All packages include;
- ✓Free hotel parking
 - ✓Late check out
 - ✓\$20 Gift cards
 - ✓Taxes & Fees

Only at Maple Fun Tours
sales_mft@maplefun.com



Vancouver Staycation

Sheraton Vancouver Wall Centre

Deluxe Room : \$190/room (6/1-9/30)

- In North Tower (20th floor or up)
- 1 King or 2 Double beds (350-400 sq.ft.)
- Max 4 people per room (Add \$40 from 3rd person)
- Check in 3PM / Check out 1PM
- Child at 17 years old or younger stay free with adult

Maple Fun 40 years anniversary rate!



Carmana Plaza

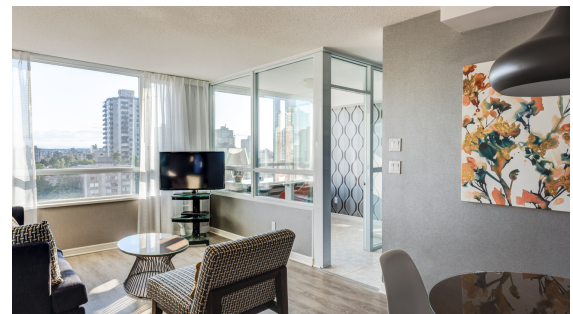
Standard 1 Bedroom : \$217/room (6/1-9/30)

- 1 King or 2 Twin beds & sofa bed (620 sq.ft.)
- Max 4 people per room (Add \$27 from 3rd person)

Executive 1 Bedroom : \$230/room (6/1-9/30)

- 1 Queen bed (620 sq.ft.)
- Max 3 people per room (Add \$27 from 3rd person)
- Check in 4PM / Check out 2PM
- Child at 12 years old or younger stay free with adult

Spacious suites with full kitchen!
 Urban Fare is across from the hotel.
 Located on Alberni Street.



Blue Horizon Hotel

Water View (1 King)

\$242/room (6/1-6/30) / \$269/room (7/1-8/31)

Water View (2 Queens)

\$229/room(6/1-6/30) / \$242/room (7/1-8/31)

- 18-30th floor (400 sq.ft.)
- Max 3 (1 King) or 4 (2 Queens) people per room (Add \$34 from 3rd person)
- Check in 2PM / Check out 1PM
- Child at 16 years old or younger stay free with adult

Corner rooms with balcony,
 stunning Water View!
 Located on Robson Street.

